

HEAVY DUTY HYUNDAI



Mono Crystalline Module
275W - 300W **60 CELLS**



Hyundai is one of the biggest brand names in the world. As a Heavy Industries manufacturer, Hyundai uses processes superior to standard PV manufacturing techniques. That is why we call our solar panel range “Heavy Duty”.



**SCAN TO
WATCH VIDEO**

Download QR Reader on your mobile device



PERL TECHNOLOGY

PERL technology provides ultra-high efficiency with better performance in low irradiation. Maximises installation capacity in limited space.



ANTI-LID / PID

Both LID (Light Induced Degradation) and PID (Potential Induced Degradation) are strictly eliminated to ensure higher actual yield during lifetime.



MECHANICAL STRENGTH

Tempered glass and reinforced frame design withstand rigorous weather conditions such as heavy snow and strong wind.



RELIABLE WARRANTY

Global brand with powerful financial strength provides a reliable 25-year warranty.



CORROSION RESISTANT

Various tests under harsh environmental conditions such as ammonia and salt-mist passed.



UL / VDE TEST LABS

Hyundai's R&D centre is an accredited test laboratory of both UL and VDE.

ELECTRICAL CHARACTERISTICS

MODEL	HiS-S275RG	HiS-S280RG	HiS-S285RG	HiS-S290RG	HiS-S295RG	HiS-S300RG
Nominal Output (Pmpp) W	275	280	285	290	295	300
Open Circuit Voltage (Voc) V	38.4	38.5	38.7	38.8	39.0	39.1
Short Circuit Current (Isc) A	9.3	9.4	9.5	9.7	9.8	9.9
Voltage at Pmax (Vmpp) V	31.6	31.7	31.8	32.0	32.1	32.3
Current at Pmax (Impp) A	8.7	8.8	8.9	9.1	9.2	9.3
Module Efficiency %	16.8	17.1	17.4	17.7	18.0	18.3
Cell Type	6", mono-crystalline silicon					
Maximum System Voltage V	1,000					
Temperature Coefficient of Pmax °C	-0.40					
Temperature Coefficient of Voc %/K	-0.29					
Temperature Coefficient of Isc %/K	0.039					

MECHANICAL CHARACTERISTICS

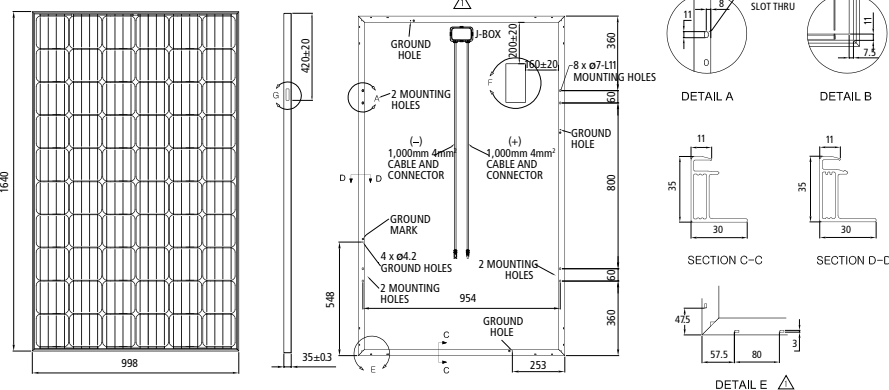
Dimensions	998mm (W) × 1,640mm (L) × 35mm (H)
Weight Approx.	18.7kg
Solar Cells	60 cells in series (6 × 10 matrix) (Hyundai cell, Made in Korea)
Output Cables	4 mm ² (12AWG) cables with polarised weatherproof connectors
IEC certified	(UL listed), Length 1.0m
Junction Box	IP68, weatherproof, IEC certified (UL listed)
Bypass Diodes	3 bypass diodes to prevent power decrease by partial shade
Construction Front	Anti-reflection coated glass, 3.2mm
Encapsulant	EVA Back Sheet: Weatherproof film
Frame	Clear anodized aluminum alloy type 6063

TEMPERATURE CHARACTERISTICS

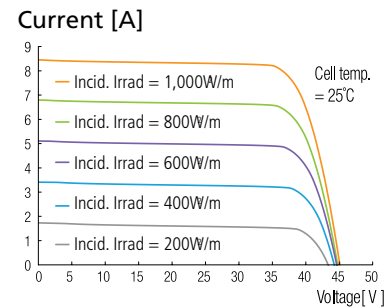
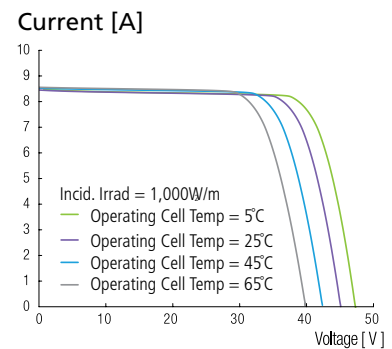
Nominal Operating Cell Temperature	46°C ± 2
Operating Temperature	-40 – 85°C
Maximum System Voltage	DC 1,000 V (IEC) DC 1,000 V (UL)
Maximum Reverse Current	15A (Up to 285W) 20A (Above 290W)

MODULE DIAGRAM (unit:mm)

Mono-Crystalline
Si Type-Front Side View



I-V CURVES



INSTALLATION SAFETY GUIDE

- Only qualified personnel should install or perform maintenance.
- Be aware of dangerous high DC voltage.
- Do not damage or scratch the rear surface of the module.
- Do not handle or install modules when they are wet.

CONTACT

Australian
Importer and Manufacturer
Hyundai Green Energy

Hyundai Sales and Warranty
Supply Partners Pty Ltd

- ☎ 07 3122 7584
- ✉ sales@supplypartners.com.au
- 🌐 www.hhgreen.com